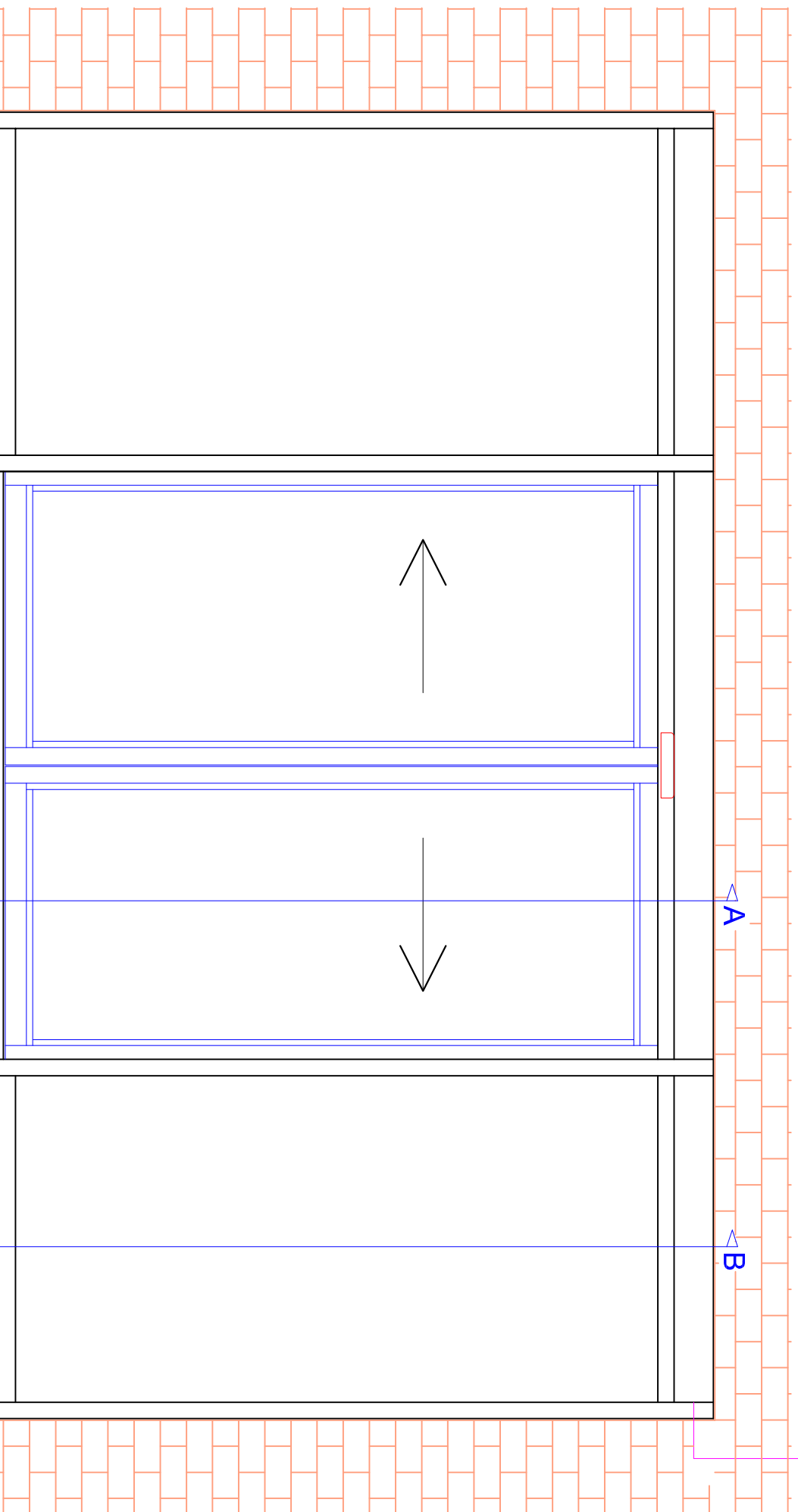
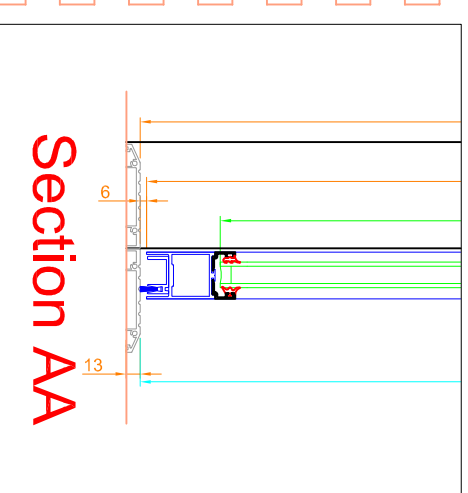
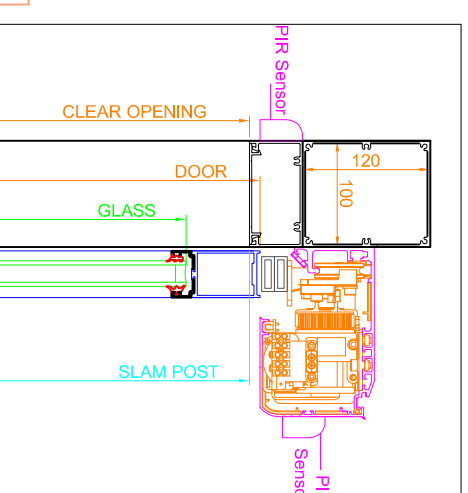
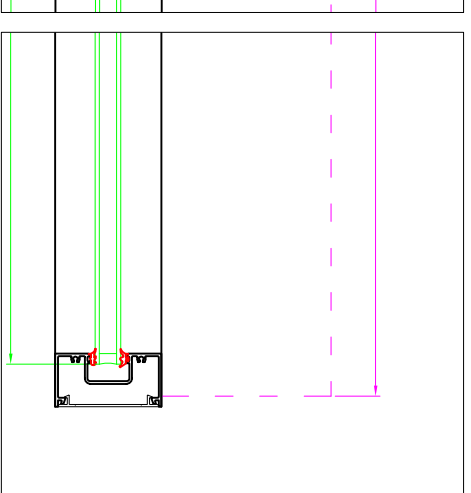


## BI-PARTING SLIDING (DOUBLE GLAZED)



240V Switched, fused, illuminated spur within 1m of operator



### Specification

Framing : DSS range of non-thermally broken shop front sections  
 Finish - PPC RAL TBC  
 Door leaf fitted with 1No. Euro-profile manual hook lock.  
 Glass :Double Glazed Units (Max 24mm)  
 Note : Manifestations to full height glazing to comply with current Building Regulations by others

### Auto Specification

Automatic Doors : 1No. FDS A100 Bi-Parting Sliding Automatic Door complete with programme select positioned on the side of the operator.  
 Activation : Radar operation internally and externally.  
 The doors will open on activation from the fire alarm or mains power failure.  
 Note : A normally open volt free fire alarm contact to within 1m of opening will be required and final connection to be by others.

### Customer Obligation

To provide 1No., designated 240V switched, fused, illuminated spur to within 1m of opening for each door operator. Provide a normally open volt free fire alarm contact to within 1m of opening.  
 All to be confirmed as installed prior to our arrival on site. Please note we will require unimpeded access to works location.  
 All automatic door work to be carried out by an ADSA accredited engineer to BS7036:1996

### Drawing For Approval



Job:

Client:

Dwg. Title: Bi-Parting Sliding Door

Drawn by: BW

Job No: -

Dwg. No:

Scale: NTS

Revision:

Date:

Required for drawing approval

Print :

Sign :

Date :